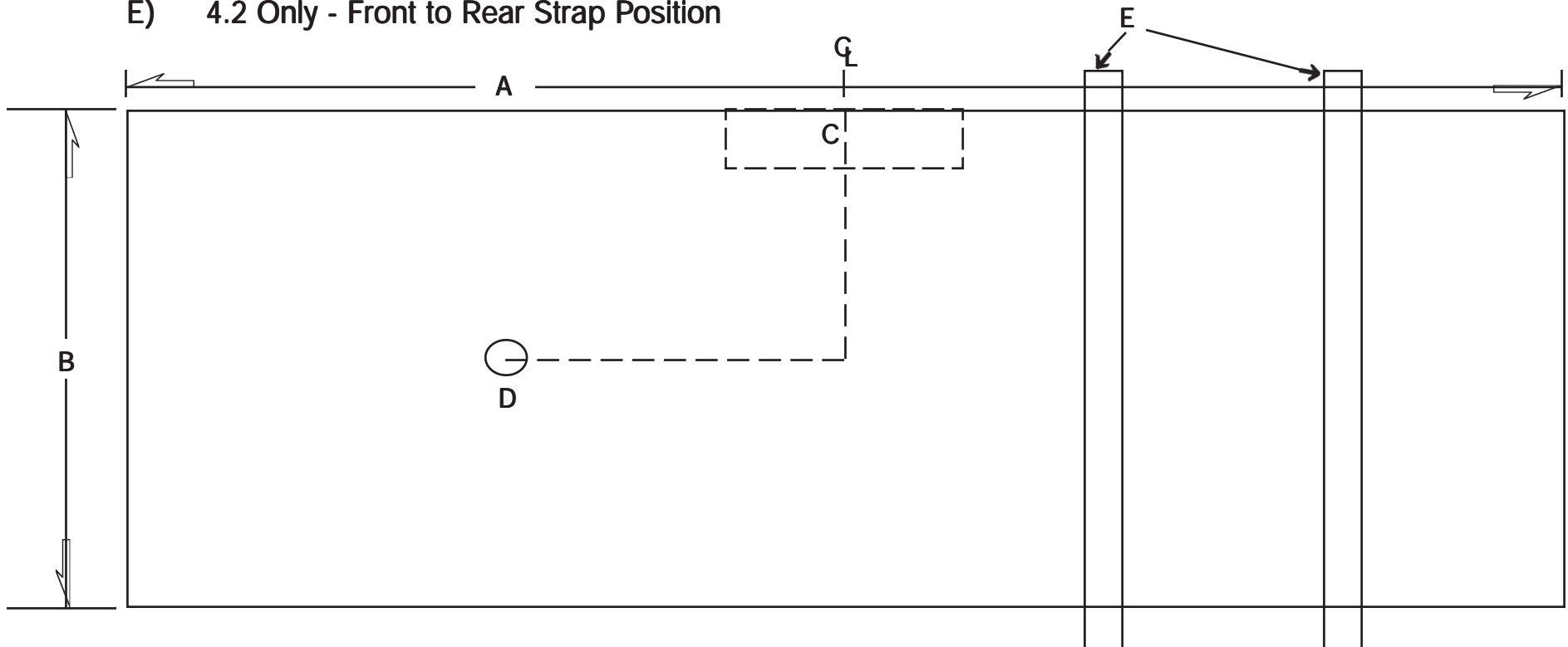




PULLING BLANKET MEASUREMENTS

- A) Length (Circumference) + 6"
- B) Width (Front to Rear) Note: 4.2 Blankets must be at least 17"
- C) Notches
- D) Holes of Any Type
- E) 4.2 Only - Front to Rear Strap Position



- 1) Type Vehicle (ie: JD 4230, IH 1066, etc.) _____
- 2) Rating Needed - 4.1 4.2
- 3) NTPA Class _____